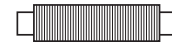


# MILLELUCI

**68% Poliestere Metallizzato**  
 Polyester Metallise  
 Polyester Metallized  
 Polyester Metalisierter



10 per  
10 g cond.

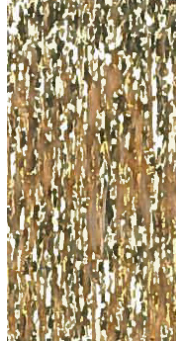


800 m ±  
per 10 g

**32% Poliammide**  
 Polyamide Polyamid



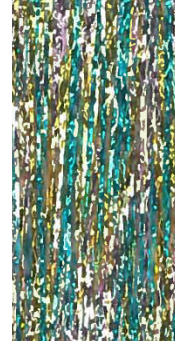
1



6



26



23

# SCINTILLA

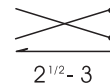
**60% Cupro**

**40% Poliestere Metallizzato**  
 Polyester Metallise  
 Polyester Metallized  
 Polyester Metalisierter

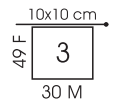


10 per  
25 g cond.

187 m ±  
per 25 g



2<sup>1/2</sup>-3



T 48  
300/350 g



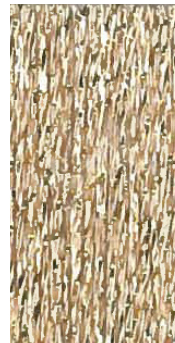
T 42  
250/300 g



100



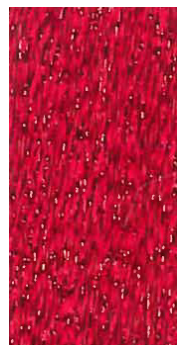
102



101



119



112



104



138